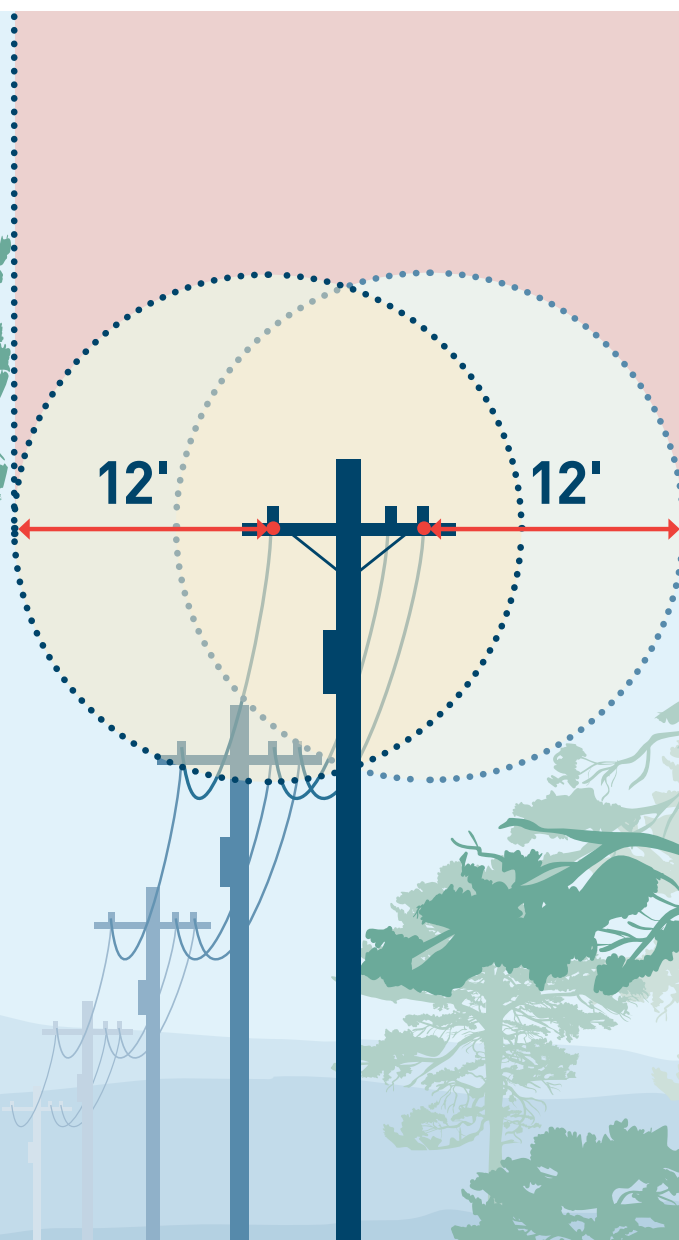


WILDFIRE SAFETY WORK



- ✓ **Further reducing the risk of wildfires** and keeping our communities safe
- ✓ Meeting new state **vegetation and fire safety standards**
- ✓ **Addressing overhanging branches or limbs**
- ✓ **Removing all wood debris**, unless notified that the property owner would like to keep it



For illustrative purposes only

For more information about this wildfire vegetation management work, please call us at 1-877-295-4949 or email us at wildfiresafety@pge.com.

FIRE DEFENSE ZONES

As an added layer of protection, we are looking at the area 15 feet on either side of the pole line to create fire defense zones in extreme fire-threat areas.

Fire defense zones:

- ✓ Create safe space between power lines and trees and brush that can act as fuel for wildfires
- ✓ Help slow the spread of fires and improve access for first responders in the event of a wildfire
- ✓ Enhance defensible space around homes, businesses and properties, improving safety



For illustrative purposes only



To learn more, visit pge.com/firedefensezones